

NGUNGURU STRATEGIC VISION | 2024 - 2026

Mihi

Te mahi tahi kia eke ki te hiranga mo ia tamaiti - working together to achieve excellence for every child. Here at Ngunguru School we have designed a three-year strategy that places our learners at the heart of every decision, plan, and initiative.

Reporting

This strategy will be discussed at every Board meeting with the aim of reporting back to our hāpori and whānau annually.

Ngā kaiako | Our Teachers

Supporting innovative teachers and leaders through continuous improvement and a culture of high expectations and excellence.

Hāpori | Community

Our community is involved and connected to the life of the school.

Haukāinga | Partnership

Strengthen our relationship with mana whenua.

Ngā ākonga | Our students

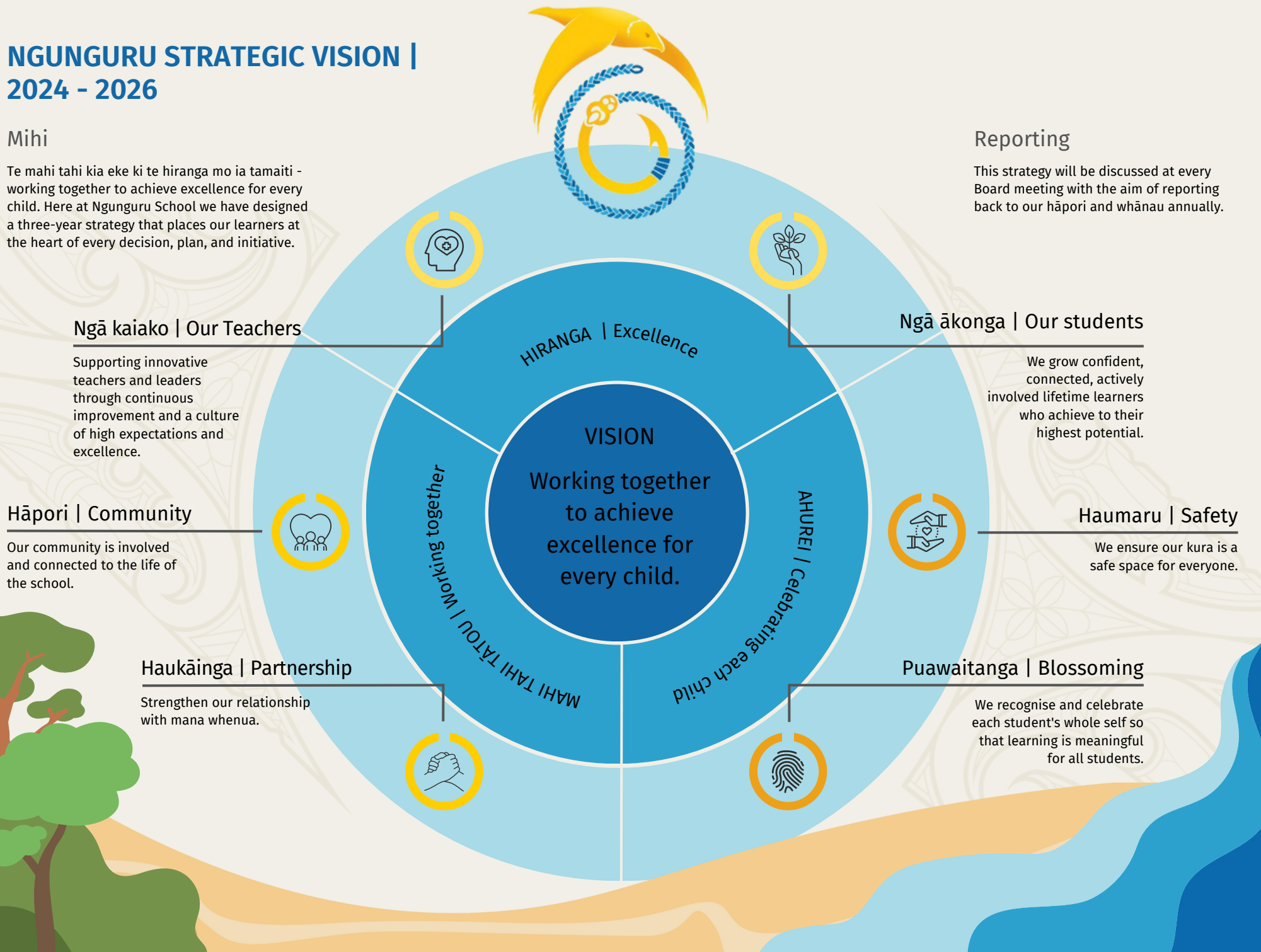
We grow confident, connected, actively involved lifetime learners who achieve to their highest potential.

Haumaru | Safety

We ensure our kura is a safe space for everyone.

Puawaitanga | Blossoming




We recognise and celebrate each student's whole self so that learning is meaningful for all students.



NGUNGURU STRATEGIC PLAN | 2024 - 2026

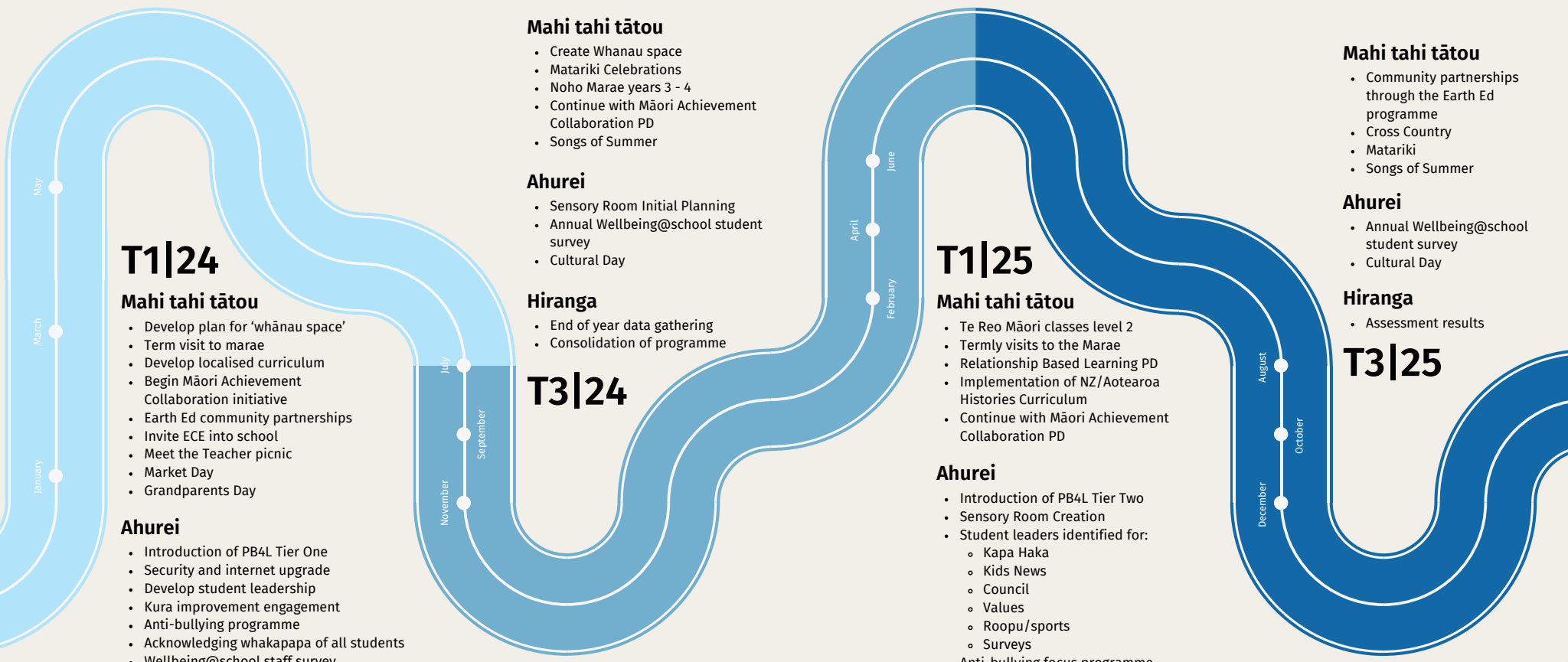
To achieve our strategic vision, the Board have implemented the following initiatives and measures.



Goal	Initiative	Measure
 <p>Hiranga Excellence</p> <p>Develop a robust curriculum focusing on excellence, which allows students to achieve to their highest potential</p>	<ul style="list-style-type: none"> • New assessment schedule • Full implementation of Writer's Toolbox • Full implementation of PRIME • Develop curriculum teams • Kahui Ako Structured Literacy Professional Development 	<ul style="list-style-type: none"> • 80% of students at or above their expected level across the curriculum. • 80% of all students are at the expected level in writing. • 80% of students achieving at the expected level in math.
 <p>Mahi Tahi Tātou Working Together</p> <p>Strengthen relationships with hāpori and community stakeholders</p>	<ul style="list-style-type: none"> • Weekly reo Maori lessons for teachers • Matariki celebrations • Noho marae • NZ Histories curriculum • Maori Achievement Collaboration • Relationships First Professional Development • Earth Ed community partnerships • ECE partnerships 	<ul style="list-style-type: none"> • 90% attendance at three-way conferences. • Increased engagement through school social media. • Termly functions with or at marae • Co-designed local curriculum • Termly engagement with community groups on environmental activities
 <p>Ahurei Celebrating Each Child</p> <p>Ensure our learning environment is a safe and inclusive space for all to learn and grow.</p>	<ul style="list-style-type: none"> • Introduce PB4L • Sensory Room • Security and internet upgrade • Develop student leadership • Bi-annual Life Education Bus • Acknowledge whakapapa of all students 	<ul style="list-style-type: none"> • Wellbeing@school survey results demonstrate positive wellbeing trend. • Attendance rates above 90%. • 80% school whanau have attended a school event. • Increased student participation in school decision-making • All students know their pepeha.

NGUNGURU STRATEGIC TIMELINE | 2024 - 2026

The timeline below illustrates when the initiatives will take place over the course of two years.



T1|24

Mahi tahi tātou

- Develop plan for 'whānau space'
- Term visit to marae
- Develop localised curriculum
- Begin Māori Achievement Collaboration initiative
- Earth Ed community partnerships
- Invite ECE into school
- Meet the Teacher picnic
- Market Day
- Grandparents Day

Ahurei

- Introduction of PB4L Tier One
- Security and internet upgrade
- Develop student leadership
- Kura improvement engagement
- Anti-bullying programme
- Acknowledging whakapapa of all students
- Wellbeing@school staff survey

Hiranga

- Confirm assessment schedule
- Mid year data gathering
- Curriculum teams developed.
- Introduction of Prime across the whole school
- Visit to other Prime Schools
- Full implementation of Writer's Toolbox
- Year 0 to 3 teachers part of the BSLA structured literacy PD

Mahi tahi tātou

- Create Whanau space
- Matariki Celebrations
- Noho Marae years 3 - 4
- Continue with Māori Achievement Collaboration PD
- Songs of Summer

Ahurei

- Sensory Room Initial Planning
- Annual Wellbeing@school student survey
- Cultural Day

Hiranga

- End of year data gathering
- Consolidation of programme

T3|24

T1|25

Mahi tahi tātou

- Te Reo Māori classes level 2
- Termly visits to the Marae
- Relationship Based Learning PD
- Implementation of NZ/Aotearoa Histories Curriculum
- Continue with Māori Achievement Collaboration PD

Ahurei

- Introduction of PB4L Tier Two
- Sensory Room Creation
- Student leaders identified for:
 - Kapa Haka
 - Kids News
 - Council
 - Values
 - Roopu/sports
 - Surveys
- Anti-bullying focus programme
- Annual wellbeing@school staff survey

Hiranga

- Assessment rubrics implemented
- Moderation of Prime Math
- NZ standardised tests implemented
- Year 0 to 3 teachers part of the BSLA structured literacy PD over the year

Mahi tahi tātou

- Community partnerships through the Earth Ed programme
- Cross Country
- Matariki
- Songs of Summer

Ahurei

- Annual Wellbeing@school student survey
- Cultural Day

Hiranga

- Assessment results

T3|25

